



PANORAMA

Resort & Spa – Feusisberg

# SEMINARS & EVENTS



# SEMINARS & EVENTS

Our facilities include over 10 event and seminar rooms, as well as 8 meeting rooms with fantastic lake views over Lake Zurich and professional infrastructure.



VARIOUS SEMINAR ROOMS  
50m<sup>2</sup> to 190m<sup>2</sup>

## BUSINESS

### GROSSZÜGIG, MODERN, EXKLUSIV

Expansive views open up perspectives for your success. Our sunlit meeting and seminar rooms create an inspiring atmosphere that invites participants to focus on the essentials and boosts your creativity.

Reservation +41 (0)44 786 00 55

[www.panoramaresort.ch/seminare-events](http://www.panoramaresort.ch/seminare-events)

DISCOVER  
OFFERS  
ONLINE.



# ROOM OVERVIEW

SIZE	NAME
170 m <sup>2</sup>	Schönfels
100 m <sup>2</sup>	Schönfels 1 + 2 + Corridor
100 m <sup>2</sup>	Uri - Schwyz / Zürich - Bern
50 m <sup>2</sup>	Uri / Schwyz / Zürich / Bern / Glarus



## THE HOTEL

The hotel features 87 rooms, various event spaces for private and business celebrations, a wellness area spanning over 2,000 sqm with a fitness center, saunas, and pools.



SIZE	NAME
190 m <sup>2</sup>	Chada 1+2
120 m <sup>2</sup>	Chada 1
70 m <sup>2</sup>	Chada 2
50 m <sup>2</sup>	Luzern
50 m <sup>2</sup>	St. Gallen
20 - 45 m <sup>2</sup>	Various Group Rooms



# BENEFITS

---

- Free outdoor parking
- Wi-Fi throughout the property
- Welcome coffee upon arrival
- Free projector in the plenary
- Free use of the Akari Gym, pools, and outdoor sauna
- Complimentary room upgrade for the presenter or CEO
- Double room for single use available for participants
- Wide selection of lunch and dinner options
- Various room categories
- Team event coordination
- Choice of several restaurants

# CULINARY OFFERS

## LUNCH

### BUSINESS LUNCH

2-COURSE CHF 60 | 3-COURSE CHF 70

Choice of starter and main course (meat, fish, or vegetarian). 3-course includes dessert.



### BUFFET LUNCH | CHF 70

Ideal for quick lunch breaks and networking. Assorted starters, main courses, and desserts.

### SANDWICH LUNCH | CHF 70

Perfect for a working lunch in the meeting room. Includes starters, various sandwiches, and dessert of the day.

### CONTEMPORARY THAI SET 20-50 PEOPLE 3-COURSE CHF 95 | 4-COURSE CHF 105

Includes starter, soup, and a choice of main courses. The 4-course option includes dessert.

### THAI BUFFET | CHF 105

20-50 PEOPLE

Buffet with traditional Thai dishes including starters, main courses, and desserts.

# APÉRO

---

## SMALL NETWORKING-APÉRO

DURATION: 30 - 60 MIN.

**CHF 40.-** PER PERSON | 6 - 50 PEOPLE

Includes red and white wine, beer, Prosecco, mineral water, orange juice, and appetizers.

## LARGE NETWORKING-APÉRO

DURATION: 60 - 75 MIN.

**CHF 50.-** PER PERSON | 6 - 50 PEOPLE

Includes wines, beers, Prosecco, mineral water, orange juice, appetizers, pastries, and various delicacies.

## THAI NETWORKING-APÉRO

DURATION: 60 - 75 MIN.

**CHF 55.-** PER PERSON | 6 - 50 PEOPLE

Features Thai wines, beers, and appetizers (Tuna Tartar, Chicken Satay, Fried Spring Rolls, and Shrimp Bread).



# DINNER

---

## GOURMET-MENU

**3-COURSE CHF 70 | 4-COURSE CHF 80**

Seasonal menu recommended by the chef.

## BUFFET DINNER | CHF 80

Elegant buffet dinner, ideal for the networking of the participants. Includes various starters, main courses, and desserts.

## CONTEMPORARY THAI SET

**3-COURSE CHF 95 | 4-COURSE CHF 105**

Mon + Tue 20 - 50 People

Wed + Thu max. 30 People

Contemporary Thai Dinner including a starter, soup, and a choice of main courses. The 4-course option includes dessert.

### THAI BUFFET | CHF 105

Mon + Tue, 20 - 50 People

Buffet with traditional Thai dishes.  
Starters, main courses and dessert.

### THAI "FAMILY STYLE" | CHF 105

Mon + Tue, 20 - 50 People

Three-course menu served family style on plates in the center of the table for self-service

### THAI SUKI | CHF 80

Mon + Tue, 20 - 50 People

Wed - Sun upon request

Hotpot (similar to fondue chinoise) with bouillon, meat, fish, noodles, vegetables and fine sauces.



# RESTAURANT KÖRNLISEGG

### CHEESE FONDUE / RACLETTE CHF 68 | CHF 74.- PER PERSON

Wed - Fri, 6 - 10pm, 20 - 45 People  
15 min. from Hotel by Car

Includes mulled or white wine for aperitif,  
mixed salad starter, exquisite cheese fon-  
due or raclette, and dessert.

### ADDITIONAL MENUS

More menus are available according to the suggestions on the website and can be booked upon request.



# ROOMS & SUITES

**JUNIOR SUITE**  
Wonderful 45m<sup>2</sup>  
feel-good suites  
with direct access  
to the spa and full  
glazing facing the  
lake.

Experience maximum comfort and a luxurious ambience in our stylishly furnished rooms and suites. Enjoy state-of-the-art facilities, comfortable beds and an incomparable view of the lake and the mountains.



## ROOMS

### CLASSIC HILLSIDE

Rooms: 27

Size 23 m<sup>2</sup>

Mountain view, Balcony, Workspace

from CHF 190



### SUPERIOR CHIC

Rooms: 31

Size 26 m<sup>2</sup>

Lake view, Workspace

from CHF 240



# SUITES

---

## JUNIOR SUITES

Rooms: 14

Size 45 m<sup>2</sup>

Lake view, Kitchenette, Workspace

from CHF 400



## PANORAMA SUITE

Room: 1

Size 90 m<sup>2</sup>

Lake view, Balcony, Kitchenette,  
Living room, Workspace

from CHF 600

# ORIENTAL BOUTIQUE

---

## ARABIC-ORIENTAL AMBIANCE, AS FROM A TALE OF 1001 NIGHTS

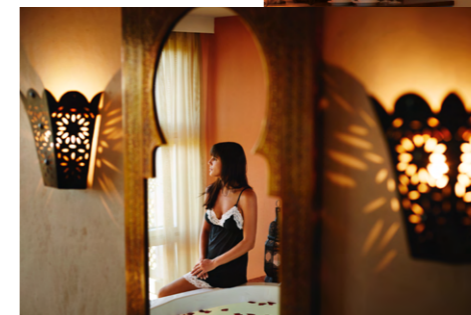
9 Boutique-Rooms

Private jacuzzi in each room

Size: 36 m<sup>2</sup>

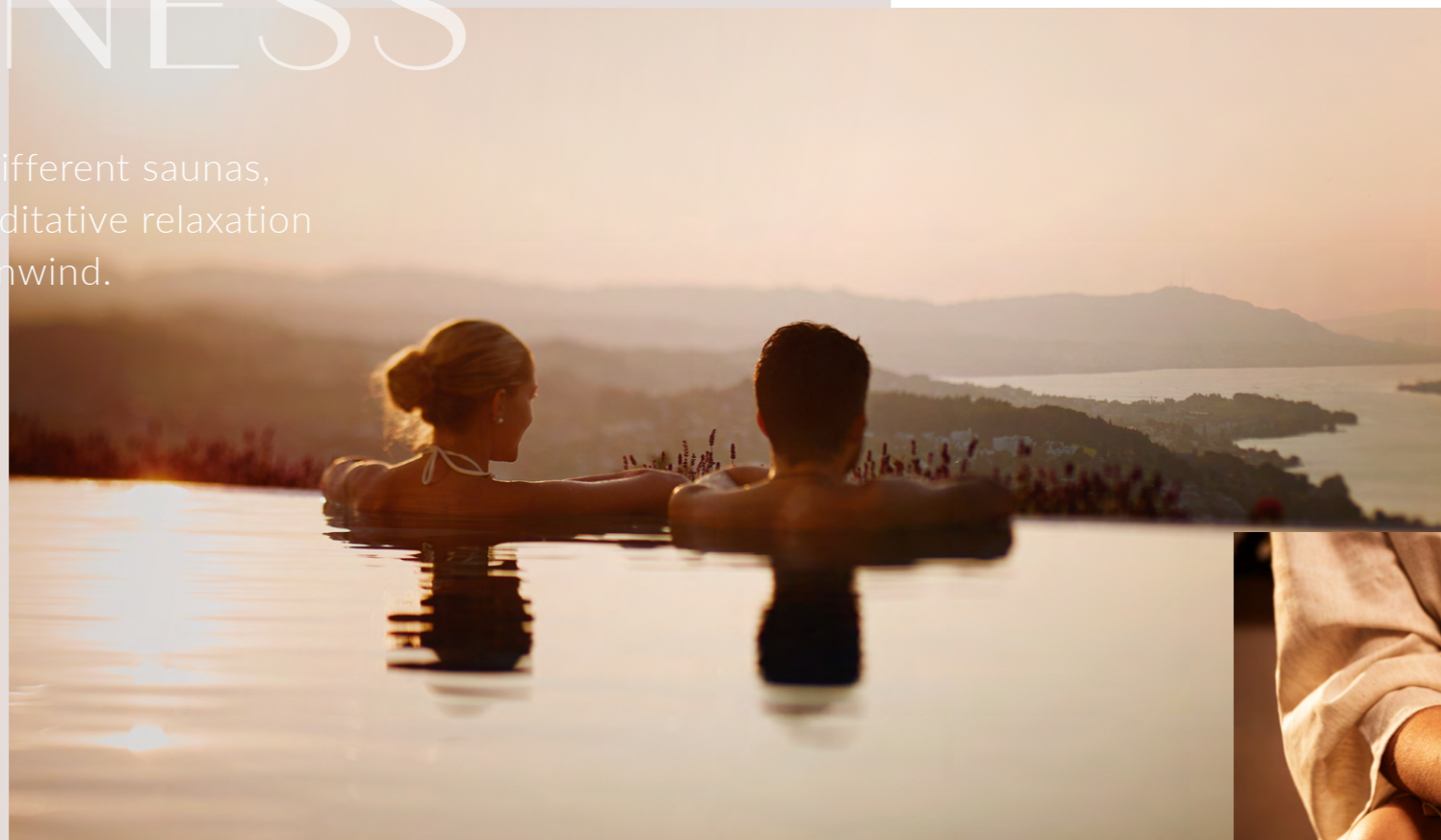
Lake view, Terrace, Workspace

from CHF 300



# WELLNESS

A generous pool landscape, 7 different saunas, steam baths, and numerous meditative relaxation and quiet zones invite you to unwind.



## AKARI SPA

---

### **RELAX, RECHARGE & ESCAPE THE EVERYDAY**

Discover the "Akari" Spa, our wellness oasis of light, which symbolizes energy and wellbeing in Japan. Featuring extensive glazing facing the lake and an open design, our wellness area on two floors and over 2000 m<sup>2</sup> provides space for tranquility, relaxation, and rejuvenation.

[panoramaresort.ch/wellness](https://panoramaresort.ch/wellness)



DISCOVER  
OFFERS  
ONLINE.



# TEAMEVENTS

---

## TEAMBUILDING & SPORT ACTIVITIES

Sport lessons directly at the hotel.      Outdoor activity programs for summer & winter

Scooter fun                      Flying Fox

Airboarding                      ... and much more

## TEAMBUILDING

Raft building                      Ice sculpting

Western Games                      Olympic Games

Rarmers' olympiad                      ... and much more

## CONTACT

[www.impuls-event.ch](http://www.impuls-event.ch) | Tel. +41 (0)44 687 77 02  
[www.panoramaresort.ch](http://www.panoramaresort.ch) | Tel. +41 (0)44 786 00 55



# HOTEL-SHUTTLE

---

## FROM PFÄFFIKON/SZ STATION TO THE HOTEL (UPON ADVANCE RESERVATION)

1 to 3 People                      CHF 35  
4 to 7 People                      CHF 65

## AIRPORT ZURICH-KLOTEN TO THE HOTEL (UPON ADVANCE RESERVATION)

1 to 3 People                      CHF 176  
4 to 7 People                      CHF 206

## PUBLIC TRANSPORTATION ACCESS

The Panorama Resort & Spa can also be reached by public transport. Regular regional and S-Bahn trains go to Pfäffikon/SZ. From Pfäffikon/SZ, take bus no. 190 towards Schindellegi-Feusisberg and get off at the "Feusisberg Hotel Panorama" stop.



Panorama Resort & Spa  
Schönfelsstrasse  
8835 Feusisberg

T +41 (0)44 786 00 00  
info@panoramaresort.ch  
**panoramaresort.ch**

