



PANORAMA

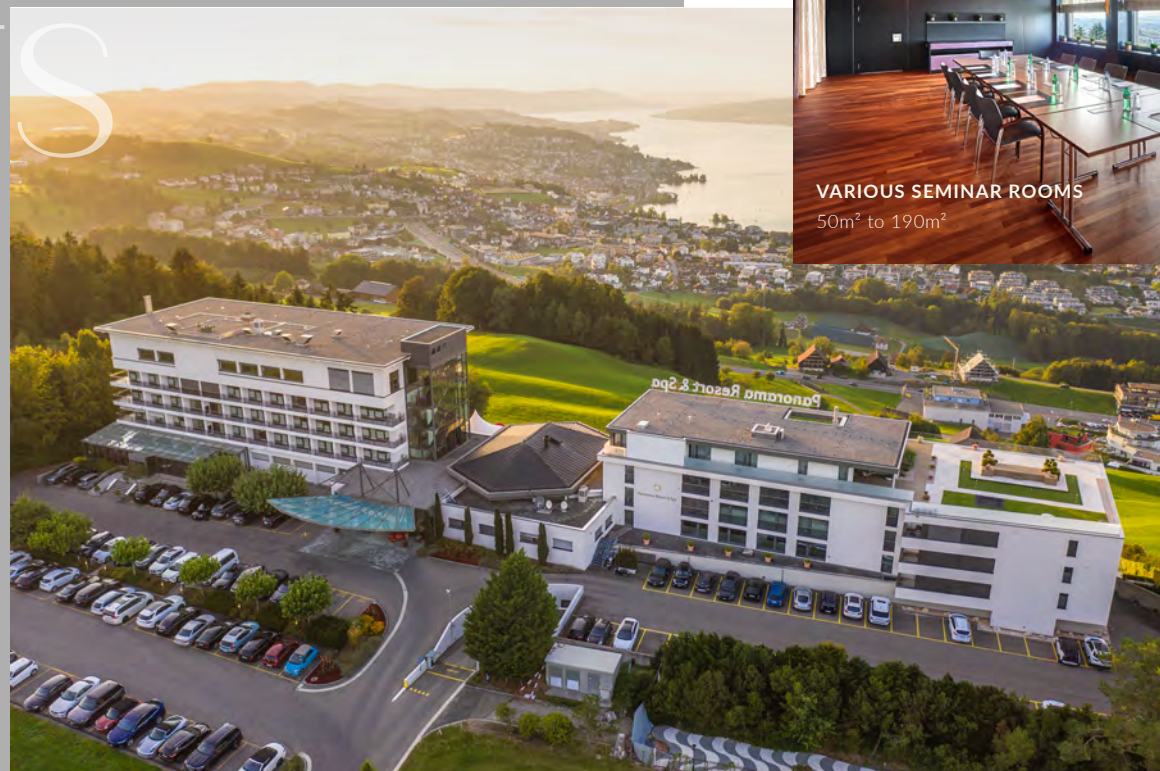
Resort & Spa – Feusisberg



SEMINARS & EVENTS

SEMINARS & EVENTS

Our facilities include over 10 event and seminar rooms, as well as 8 meeting rooms with fantastic lake views over Lake Zurich and professional infrastructure.



VARIOUS SEMINAR ROOMS
50m² to 190m²

BUSINESS

SPACIOUS, MODERN, EXCLUSIV

Expansive views open up perspectives for your success. Our sunlit meeting and seminar rooms create an inspiring atmosphere that invites participants to focus on the essentials and boosts your creativity.

Reservation +41 (0)44 786 00 55

www.panoramaresort.ch/seminare-events

DISCOVER
OFFERS
ONLINE.



ROOM OVERVIEW

| SIZE | NAME |
|--------------------|---------------------------------------|
| 170 m ² | Schönfels |
| 100 m ² | Schönfels 1 + 2 + Corridor |
| 100 m ² | Uri - Schwyz / Zürich - Bern |
| 50 m ² | Uri / Schwyz / Zürich / Bern / Glarus |



THE HOTEL

The hotel features 87 rooms, various event spaces for private and business celebrations, a wellness area spanning over 2,000 sqm with a fitness center, saunas, and pools.



| SIZE | NAME |
|------------------------|---------------------|
| 190 m ² | Chada 1+2 |
| 120 m ² | Chada 1 |
| 70 m ² | Chada 2 |
| 50 m ² | Luzern |
| 50 m ² | St. Gallen |
| 20 - 45 m ² | Various Group Rooms |

PRICES

COFFEE BREAK CHF 30

Great selection of healthy brain food

LUNCH FROM CHF 60

Selection from our lunch options

DINNER FROM CHF 60

Selection from our dinner options

HOTEL ROOMS

| | |
|-------------------|--------------|
| Classic Hillside | from CHF 230 |
| Superior Chic | from CHF 280 |
| Junior Suite | from CHF 430 |
| Oriental Boutique | from CHF 310 |
| Panorama Suite | from CHF 630 |



BENEFITS

- Free outdoor parking
- Wi-Fi throughout the property
- Welcome coffee upon arrival
- Free projector in the plenary
- Free use of the Akari Gym, pools, and outdoor sauna
- Complimentary room upgrade for the presenter or CEO
- Double room for single use available for participants
- Wide selection of lunch and dinner options
- Various room categories
- Team event coordination
- Choice of several restaurants

CULINARY OFFERS

LUNCH

BUSINESS LUNCH

2-COURSE CHF 60 | 3-COURSE CHF 70

Choice of starter and main course (meat, fish, or vegetarian). 3-course includes dessert.



BUFFET LUNCH | CHF 70

Ideal for quick lunch breaks and networking. Assorted starters, main courses, and desserts.

SANDWICH LUNCH | CHF 70

Perfect for a working lunch in the meeting room. Includes starters, various sandwiches, and dessert of the day.

CONTEMPORARY THAI SET 20-50 PEOPLE

3-COURSE CHF 95 | 4-COURSE CHF 105

Includes starter, soup, and a choice of main courses. The 4-course option includes dessert.

THAI BUFFET | CHF 105

20-50 PEOPLE

Buffet with traditional Thai dishes including starters, main courses, and desserts.

APÉRO

SMALL NETWORKING-APÉRO

DURATION: 30 - 60 MIN.

CHF 40.- PER PERSON | 6 - 50 PEOPLE

Includes red and white wine, beer, Prosecco, mineral water, orange juice, and appetizers.

LARGE NETWORKING-APÉRO

DURATION: 60 - 75 MIN.

CHF 50.- PER PERSON | 6 - 50 PEOPLE

Includes wines, beers, Prosecco, mineral water, orange juice, appetizers, pastries, and various delicacies.

THAI NETWORKING-APÉRO

DURATION: 60 - 75 MIN.

CHF 55.- PER PERSON | 6 - 50 PEOPLE

Features Thai wines, beers, and appetizers (Tuna Tartar, Chicken Satay, Fried Spring Rolls, and Shrimp Bread).



DINNER

GOURMET-MENU

3-COURSE CHF 70 | 4-COURSE CHF 80

Seasonal menu recommended by the chef.

BUFFET DINNER | CHF 80

Elegant buffet dinner, ideal for the networking of the participants. Includes various starters, main courses, and desserts.

CONTEMPORARY THAI SET

3-COURSE CHF 95 | 4-COURSE CHF 105

Mon + Tue 20 - 50 People

Wed + Thu max. 30 People

Contemporary Thai Dinner including a starter, soup, and a choice of main courses. The 4-course option includes dessert.

THAI BUFFET | CHF 105

Mon + Tue, 20 - 50 People

Buffet with traditional Thai dishes.
Starters, main courses and dessert.

THAI "FAMILY STYLE" | CHF 105

Mon + Tue, 20 - 50 People

Three-course menu served familiy style on plates in the
center of the table for self-service

THAI SUKI | CHF 80

Mon + Tue, 20 - 50 People

Wed - Sun upon request

Hotpot (similar to fondue chinoise) with
bouillon, meat, fish, noodles, vegetables
and fine sauces.



RESTAURANT KÖRNLISEGG

CHEESE FONDUE / RACLETTE CHF 68 | CHF 74.- PER PERSON

Wed - Fri, 6 - 10pm, 20 - 45 People
15 min. from Hotel by Car

Includes mulled or white wine for aperitif,
mixed salad starter, exquisite cheese fon-
due or raclette, and dessert.

ADDITIONAL MENUS

More menus are available according to the
suggestions on the website and can be
booked upon request.



ROOMS & SUITES

JUNIOR SUITE
Wonderful 45m²
feel-good suites
with direct access
to the spa and full
glazing facing the
lake.

Experience maximum comfort and a luxurious ambience in our stylishly furnished rooms and suites. Enjoy state-of-the-art facilities, comfortable beds and an incomparable view of the lake and the mountains.



ROOMS

CLASSIC HILLSIDE

Rooms: 27

Size 23 m²

Mountain view, Balcony, Workspace

from CHF 230

SUPERIOR CHIC

Rooms: 31

Size 26 m²

Lake view, Workspace

from CHF 280

SUITES

JUNIOR SUITES

Rooms: 14

Size 45 m²

Lake view, Kitchenette, Workspace

from CHF 430



PANORAMA SUITE

Room: 1

Size 90 m²

Lake view, Balcony, Kitchenette,
Living room, Workspace

from CHF 630

ORIENTAL BOUTIQUE

ARABIC-ORIENTAL AMBIANCE, AS FROM A TALE OF 1001 NIGHTS

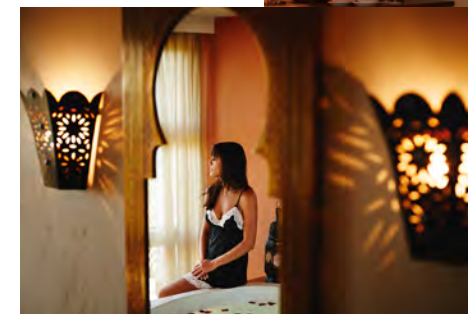
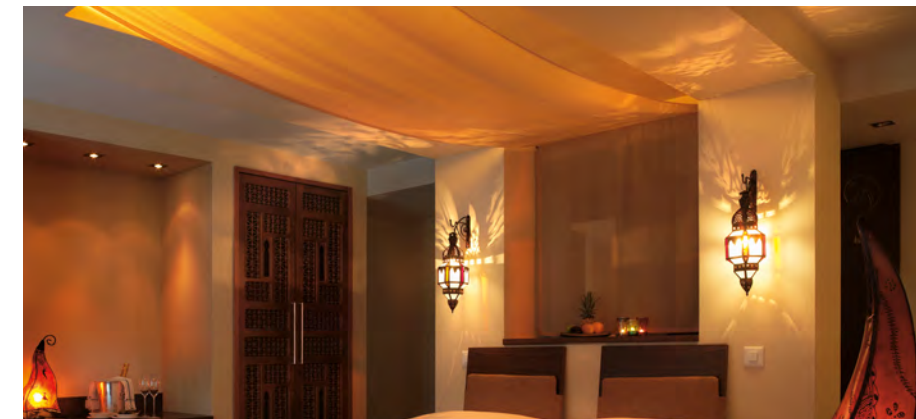
9 Boutique-Rooms

Private jacuzzi in each room

Size: 36 m²

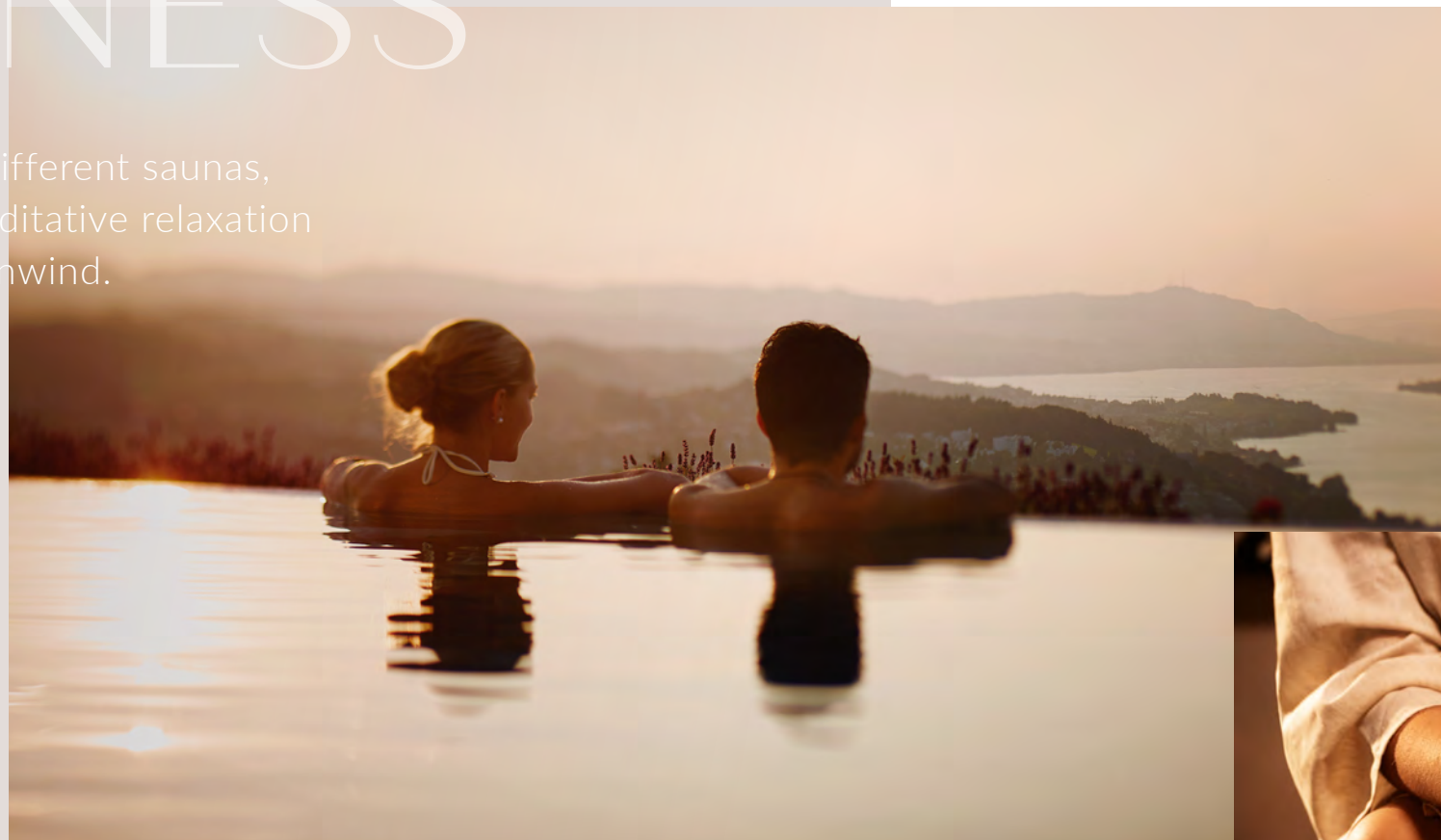
Lake view, Terrace, Workspace

from CHF 310



WELLNESS

A generous pool landscape, 7 different saunas, steam baths, and numerous meditative relaxation and quiet zones invite you to unwind.



AKARI SPA

RELAX, RECHARGE & ESCAPE THE EVERYDAY

Discover the "Akari" Spa, our wellness oasis of light, which symbolizes energy and wellbeing in Japan. Featuring extensive glazing facing the lake and an open design, our wellness area on two floors and over 2000 m² provides space for tranquility, relaxation, and rejuvenation.

panoramaresort.ch/wellness



DISCOVER
OFFERS
ONLINE.



TEAMEVENTS

TEAMBUILDING & SPORT ACTIVITIES

Sport lessons directly at the hotel.

Outdoor activity programs for summer & winter

Scooter fun

Flying Fox

Airboarding

... and much more

TEAMBUILDING

Raft building

Ice sculpting

Western Games

Olympic Games

Rarmers' olympiad

... and much more

CONTACT

www.impuls-event.ch | Tel. +41 (0)44 687 77 02

www.panoramaresort.ch | Tel. +41 (0)44 786 00 55



HOTEL-SHUTTLE

FROM PFÄFFIKON/SZ STATION TO THE HOTEL

(UPON ADVANCE RESERVATION)

1 to 3 People CHF 35

4 to 7 People CHF 65

AIRPORT ZURICH-KLOTEN TO THE HOTEL

(UPON ADVANCE RESERVATION)

1 to 3 People CHF 176

4 to 7 People CHF 206

PUBLIC TRANSPORTATION ACCESS

The Panorama Resort & Spa can also be reached by public transport. Regular regional and S-Bahn trains go to Pfäffikon/SZ. From Pfäffikon/SZ, take bus no. 190 towards Schindellegi-Feusisberg and get off at the "Feusisberg Hotel Panorama" stop.



Panorama Resort & Spa
Schönfelsstrasse
8835 Feusisberg

T +41 (0)44 786 00 00
info@panoramaresort.ch
panoramaresort.ch

