



PANORAMA

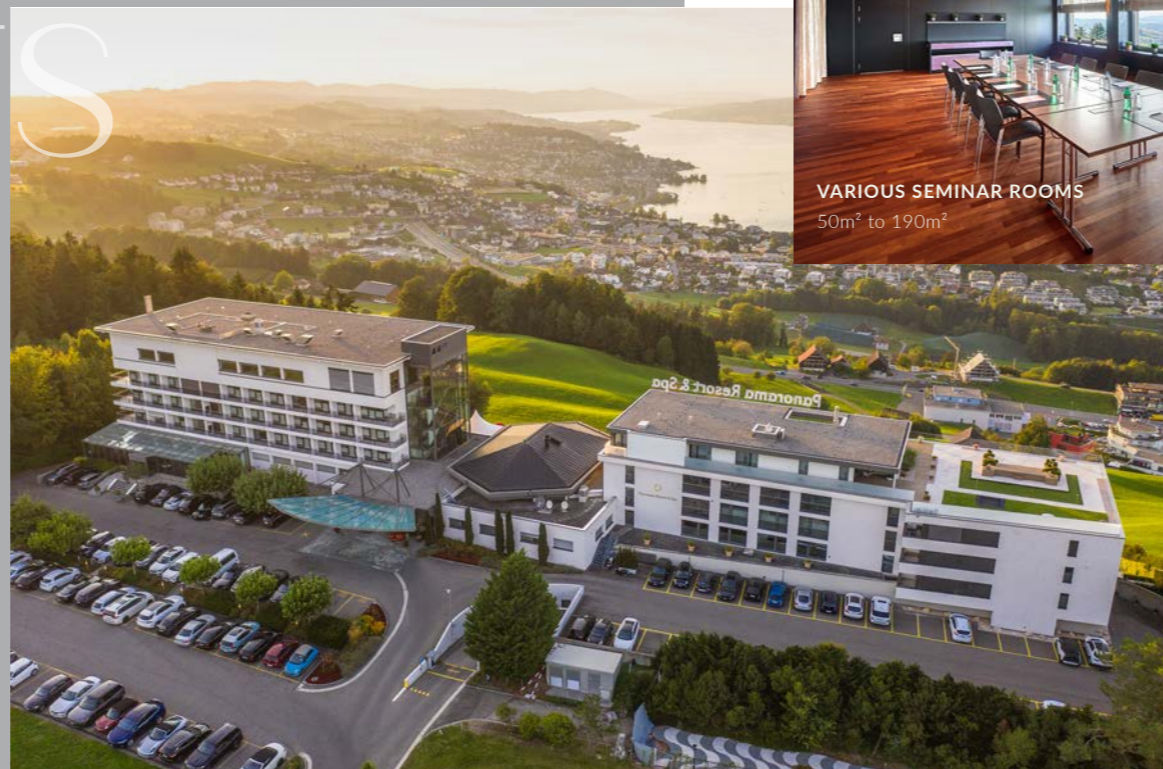
Resort & Spa – Feusisberg



SEMINARS & EVENTS

SEMINARS & EVENTS

Our facilities include over 10 event and seminar rooms, as well as 8 meeting rooms with fantastic lake views over Lake Zurich and professional infrastructure.



BUSINESS

SPACIOUS, MODERN, EXCLUSIV

Expansive views open up perspectives for your success. Our sunlit meeting and seminar rooms create an inspiring atmosphere that invites participants to focus on the essentials and boosts your creativity.

Reservation +41 (0)44 786 00 55

www.panoramaresort.ch/seminare-events

DISCOVER
OFFERS
ONLINE.



ROOM OVERVIEW

SIZE	NAME
170 m ²	Schönfels
100 m ²	Schönfels 1 + 2 + Corridor
100 m ²	Uri - Schwyz / Zürich - Bern
50 m ²	Uri / Schwyz / Zürich / Bern / Glarus



THE HOTEL

The hotel features 87 rooms, various event spaces for private and business celebrations, a wellness area spanning over 2,000 sqm with a fitness center, saunas, and pools.



SIZE	NAME
190 m ²	Chada 1+2
120 m ²	Chada 1
70 m ²	Chada 2
50 m ²	Luzern
50 m ²	St. Gallen
20 - 45 m ²	Various Group Rooms

BENEFITS

- Free outdoor parking
- Wi-Fi throughout the property
- Welcome coffee upon arrival
- Free projector in the plenary
- Free use of the Akari Gym, pools, and outdoor sauna
- Complimentary room upgrade for the presenter or CEO
- Double room for single use available for participants
- Wide selection of lunch and dinner options
- Various room categories
- Team event coordination
- Choice of several restaurants



COFFEE BREAK

"EXCLUSIVE BREAK" CHF 25.-/ PER PERSON

- Savoury pastries
- Sweet pastries
- Fruit platter
- Fruit basket
- Brain Food
- 2 different fruit juices

"CLASSIC BREAK" CHF 15.-/ PER PERSON

- Pastries
- Fruit basket
- Brain Food
- Orange juice

"LIGHT BREAK" CHF 10.-/ PER PERSON

- Pastries
- Fruit basket
- Orange juice

"WELCOME SNACK" CHF 3.-/ PER PERSON

- Croissant or chocolate croissant

CULINARY OFFERS

LUNCH

BUSINESS LUNCH

2-COURSE CHF 60 | 3-COURSE CHF 70

Choice of starter and main course (meat, fish, or vegetarian). 3-course includes dessert.



collina
FINE REVIVAL CUISINE



BUFFET LUNCH | CHF 70

Ideal for quick lunch breaks and networking. Assorted starters, main courses, and desserts.

SANDWICH LUNCH | CHF 70

Perfect for a working lunch in the meeting room. Includes starters, various sandwiches, and dessert of the day.

CONTEMPORARY THAI SET 20-50 PEOPLE

3-COURSE CHF 100 | 4-COURSE CHF 110

Includes starter, soup, and a choice of main courses. The 4-course option includes dessert.

THAI BUFFET | CHF 110

20-50 PEOPLE

Buffet with traditional Thai dishes including starters, main courses, and desserts.



LOY FAH
CONTEMPORARY THAI RESTAURANT

APÉRO

SMALL NETWORKING-APÉRO

DURATION: 30 - 60 MIN.

CHF 40.- PER PERSON | 6 - 50 PEOPLE

Includes red and white wine, beer, Prosecco, mineral water, orange juice, and appetizers.

LARGE NETWORKING-APÉRO

DURATION: 60 - 75 MIN.

CHF 50.- PER PERSON | 6 - 50 PEOPLE

Includes wines, beers, Prosecco, mineral water, orange juice, appetizers, pastries, and various delicacies.

THAI NETWORKING-APÉRO

DURATION: 60 - 75 MIN.

CHF 55.- PER PERSON | 6 - 50 PEOPLE

Features Thai wines, beers, and appetizers (Tuna Tartar, Chicken Satay, Fried Spring Rolls, and Shrimp Bread).



DINNER

GOURMET-MENU

3-COURSE CHF 70 | 4-COURSE CHF 80

Seasonal menu recommended by the chef.

BUFFET DINNER | CHF 80

Elegant buffet dinner, ideal for the networking of the participants. Includes various starters, main courses, and desserts.

CONTEMPORARY THAI SET

3-COURSE CHF 100 | 4-COURSE CHF 110

Mon + Tue 20 - 50 People

Wed + Thu max. 30 People

Contemporary Thai Dinner including a starter, soup, and a choice of main courses. The 4-course option includes dessert.

THAI BUFFET | CHF 110

Mon + Tue, 20 - 50 People

Buffet with traditional Thai dishes.
Starters, main courses and dessert.

THAI "FAMILY STYLE" | CHF 110

Mon + Tue, 20 - 50 People

Three-course menu served family style on plates in the center of the table for self-service

THAI SUKI | CHF 80

Mon + Tue, 20 - 50 People

Wed - Sun upon request

Hotpot (similar to fondue chinoise) with bouillon, meat, fish, noodles, vegetables and fine sauces.



RESTAURANT KÖRNLISEGG

CHEESE FONDUE / RACLETTE CHF 68 | CHF 74.- / PER PERSON

Wed - Fri, 6 - 10pm, 20 - 45 People
15 min. from Hotel by Car

Includes mulled or white wine for aperitif,
mixed salad starter, exquisite cheese fon-
due or raclette, and dessert.

ADDITIONAL MENUS

More menus are available according to the suggestions on the website and can be booked upon request.



ROOMS & SUITES

JUNIOR SUITE
Wonderful 45m²
feel-good suites
with direct access
to the spa and full
glazing facing the
lake.

Experience maximum comfort and a luxurious ambience in our stylishly furnished rooms and suites. Enjoy state-of-the-art facilities, comfortable beds and an incomparable view of the lake and the mountains.



ROOMS

CLASSIC HILLSIDE

Rooms: 27

Size 23 m²

Mountain view, Balcony, Workspace

from CHF 210



SUPERIOR CHIC

Rooms: 31

Size 26 m²

Lake view, Workspace

from CHF 260

SUITES

JUNIOR SUITES

Rooms: 14

Size 45 m²

Lake view, Kitchenette, Workspace

from CHF 430



PANORAMA SUITE

Room: 1

Size 90 m²

Lake view, Balcony, Kitchenette,
Living room, Workspace

from CHF 630

ORIENTAL BOUTIQUE

ARABIC-ORIENTAL AMBIANCE, AS FROM A TALE OF 1001 NIGHTS

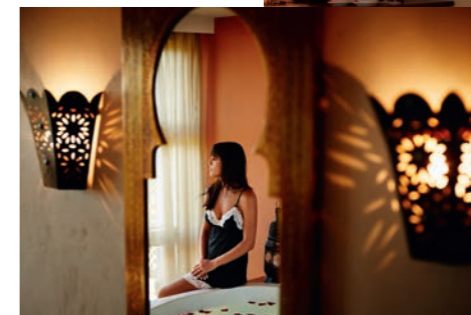
9 Boutique-Rooms

Private jacuzzi in each room

Size: 36 m²

Lake view, Terrace, Workspace

from CHF 310



WELLNESS

A generous pool landscape, 7 different saunas, steam baths, and numerous meditative relaxation and quiet zones invite you to unwind.



AKARI SPA

RELAX, RECHARGE & ESCAPE THE EVERYDAY

Discover the "Akari" Spa, our wellness oasis of light, which symbolizes energy and wellbeing in Japan. Featuring extensive glazing facing the lake and an open design, our wellness area on two floors and over 2000 m² provides space for tranquility, relaxation, and rejuvenation.

panoramaresort.ch/wellness



DISCOVER
OFFERS
ONLINE.



TEAMEVENTS

TEAMBUILDING & SPORT ACTIVITIES

Sport lessons directly at the hotel. Outdoor activity programs for summer & winter

Scooter fun Flying Fox

Airboarding ... and much more

TEAMBUILDING

Raft building Ice sculpting

Western Games Olympic Games

Rarmers' olympiad ... and much more

CONTACT

www.impuls-event.ch | Tel. +41 (0)44 687 77 02
www.panoramaresort.ch | Tel. +41 (0)44 786 00 55



HOTEL-SHUTTLE

FROM PFÄFFIKON/SZ STATION TO THE HOTEL (UPON ADVANCE RESERVATION)

1 to 3 People CHF 35
4 to 7 People CHF 65

AIRPORT ZURICH-KLOTEN TO THE HOTEL (UPON ADVANCE RESERVATION)

1 to 3 People CHF 176
4 to 7 People CHF 206

PUBLIC TRANSPORTATION ACCESS

The Panorama Resort & Spa can also be reached by public transport. Regular regional and S-Bahn trains go to Pfäffikon/SZ. From Pfäffikon/SZ, take bus no. 190 towards Schindellegi-Feusisberg and get off at the "Feusisberg Hotel Panorama" stop.



Panorama Resort & Spa
Schönfelsstrasse
8835 Feusisberg

T +41 (0)44 786 00 00
info@panoramaresort.ch
panoramaresort.ch

